

CARTIER PĂCII

- Ⓙ - 1, 2, 9. - Puiet tei.
- Ⓙ - 2, 3, 4, 5, 7, 8, 9, 10 Tilia tomentosa h-9-12m, ϕ 25-30cm.
- Ⓙ - 6 Tilia tomentosa toaletat scurt h-5m, ϕ 10cm.
- Ⓙ 11, 12, 13, 14, 15, 16, 17 Tilia tomentosa h-5-6m, ϕ 20-30cm.
- Ⓒ 20, 26, 28 Catalpa bignonioides h-2,5-3m, ϕ 15. deteriorate.
- Ⓔ 17, 18, 19 Salcâm toaletat scurt h-2,5m, ϕ 15cm, deteriorați
- Ⓜ 21, 22 - 2 puieti Malus pumila.
- Ⓟ 23 - 1 puiet Prunus persica.
- Ⓔ 24, 25, 27, 36 Salcâm toaletat scurt h-3m, ϕ 25cm, deteriorați 50%.

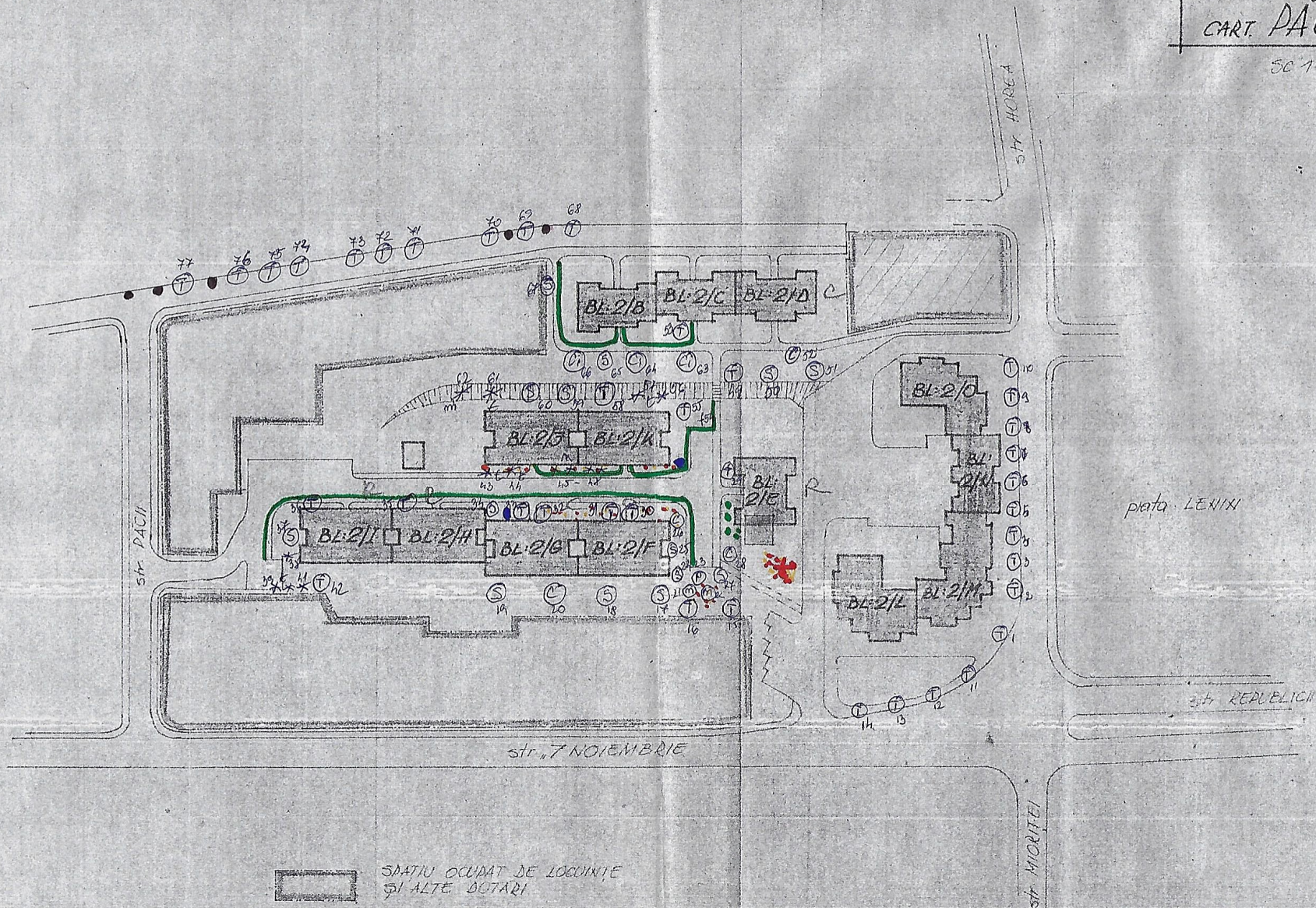
Trandafiri

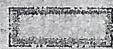

-  - flori
-  - liliac
-  - buxus
-  - gard viu - ligustrum

- Ⓙ - 30, 31, 32, 33, 35, 36 Tilia tomentosa toaletat scurt h-5m ϕ 25-30cm.
- Ⓔ - 37 - Salcâm toaletat scurt h-2m, ϕ 20cm, uscat.
- *t 38, 39, 40, 41, 43, 44 - Thuja orientalis h-3m.
- *m 45, 46, 47, 48 Picea abies h-2,5m-3m.
- Ⓙ - 49, 53 - Tilia tomentosa h-4m, ϕ 15cm.
- Ⓔ - 50, 51, 65 Salcâm \neq - 9m, ϕ 30-35cm, creșteri reduse 550 - laia.
- Ⓒ 52, 63, 64, 66 Catalpa h-5-6m ϕ 15-25cm. deteriorate.
- f - 54 Corcodus h-4m, ϕ 15cm.
- Ⓙ - 55 Tilia tomentosa h-3m, ϕ 20cm. toaletat scurt.
- - hibiscus.
- *t - 56, 57, 61 - Thuja orientalis h-3,5m.
- Ⓙ - 58 Tilia cordata h-5-6m, ϕ 25cm.
- Ⓔ - 59 - Salcâm toaletat scurt h-2,5m, ϕ 15cm.
- Ⓔ - 60 - Puiet salcâm
- *m - 62 - puiet lolid.
- Ⓔ - 67 - Salcâm toaletat scurt h-2,5m ϕ 30. deteriorat.
- Ⓙ - 68, 69, 70, 71, 72, 73, 74, 75, 76, 77 - Tilia tomentosa toaletat scurt h 2-3m, ϕ 15-25cm.

CART. PĂCII

SC 1:1000



-  SPAȚIU OCUPAT DE LOCUINȚE ȘI ALTE DOTĂRI
-  ASOCIAȚIA DE LOCUȚARI