

CARTIER SOIMILOR - PIATA

- S 1, 2, 3, 4, 5, 6 - ^{taială} salcâm h-10-12m, ϕ 40-50cm, deteriorați 50%, fără creșteri anuale.
- T 7, 8, 9, 10, 11, 12, 13, 14 - thuja orientalis (puieti) cu II-plantare.
- J 13, 14, 15, 16, 17 - juniper tărășor cu I plantare.
- T 20, 21, 23 - Tei pușios h-9-12m, ϕ 20-30cm.
- T 22 - Tei pușios h-7m, ϕ 10-15cm.
- S 24, 25, 26 - Salcâm h 15m, ϕ 30-45cm, 80% deteriorat, creșteri reduse.
- T 27, 28, 29, 30, 31 - Thuja orientalis h 3-5m.
- T 32 - Tei, h 15m, ϕ 35-40cm.
- S 33, 34, 35 - Salcâm toaletat scurt, h 2,5-3m, ϕ 35cm, fără creșteri, deteriorați.
- N 36-39 - 4 puieti nuci.
- S 40, 41 - salcâm toaletat scurt, h-3,5m, ϕ 25cm.
- S 42 - salcâm h 8-10m, ϕ 35-40cm, deteriorat 60-70%.
- T 43, 44 - tei 9-10m, ϕ 35cm.
- S 45 - salcâm toaletat scurt, h-2,5-3m, ϕ 20cm.
- T 45, 46 - tei, h 2-3m, ϕ 10-15cm.
- T 48 - Tei, h 4m, ϕ 10-15cm.
- S 49, 50 - salcâm toaletat scurt h-2-3m, creșteri slabe, deteriorat 60%.
- S 51, 52 - ^{taială} salcâm h-15-20m, ϕ 50-60cm, deteriorați, creșteri reduse.
- M 53, 54, 55 - Picea abies, h 2-3m.
- T 56, 57 - Tei, puiet cu III plantare.
- T 58, 59, 60, 61, 62 - Tei, puiet cu IV plantare.
- S 63 - salcâm h 8-10m, ϕ 40-50cm, deteriorat.
- S 64, 65 - salcâm, h 3m, toaletat scurt, ϕ 35cm.
- * M 66, 67, 68, 69 - moliz h-3m.
- T 70, 71, 72, 73, 74, 75 - 6 puieti tei cu 3-5 de la plantare.
- T 76, 77, 78, 79 - Tei h 3-4m, ϕ 15-20cm.
- J 80, 81, 82, 83, 84 - puieti jenușar pomicis.
91, 92, 93, 94.
- A 85, 86, 87 - Noorus h 3-4m, ϕ 10cm.
- T 88, 89, 90 - Tei h-4m, ϕ 15cm.
- T 95, 96, 97, 98
99, 100, 102, 103 > Tei h 8-10m, ϕ 20-30cm.
- * M 101, 104, 105 - molizi, h 10-15m, degarnisiti, fără creșteri anuale.
- T 106 - tei toaletat scurt h-3m, ϕ 15cm.
- A 107 - Acer platanoides h 10-12m, ϕ 35-40cm.
- T 108 - Tei h 12-15m, ϕ 35-40cm.

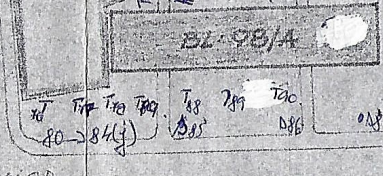
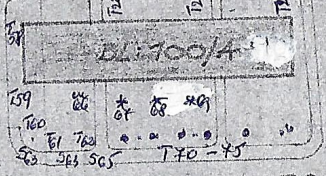
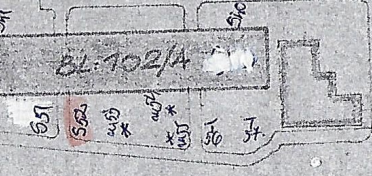
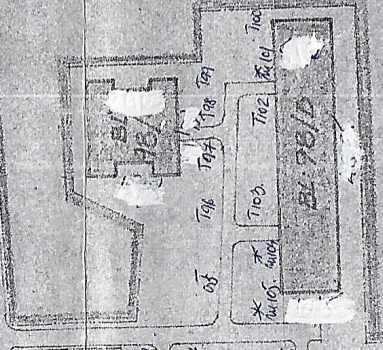
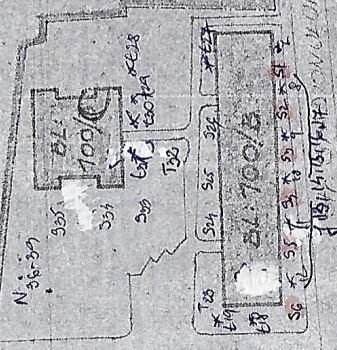
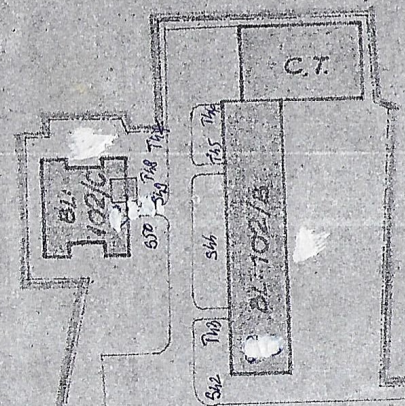
STR. MIORITICI

STR. REPUBLICII

STR. BANCI

CART. JOIMILOR-DIATA

SCALA 1:1000



SPATIU OCUPAT DE LOCUINTA SI ALTE DESTAZ
 ASOCIATIA DE LOCATARI

STR. JOIMILOR